

Applications: Compact screen filters with automatic back flushing

Standard Characteristics:

- **Filter element:** - Stainless Steel screen AISI 316 mesh, supported by a PVC cylinder.
Optional – multi layered Stainless Steel Screen
- **Available filtration:** from 50 -3000 micron
- **Filter housing material of construction:** Carbon Steel ST37.2
- **Pre-treatment:** sand blasting up to Sa 2.5 grade
- **Exterior & Interior coating:** electrostatic oven baked polyester-epoxy powder coating with a thickness of 150-200 micron
- **Connections:** VIC, Threaded socket and Flange
- **Maximum recommended working pressure:** up to 10 bar (145 psi).
- **Minimum operating working pressure during flushing:** 1.5 bar (21.8 psi)
- Equipped with an electronic control system 110V, 220V or 380-440V 3-phase, 0,25 HP

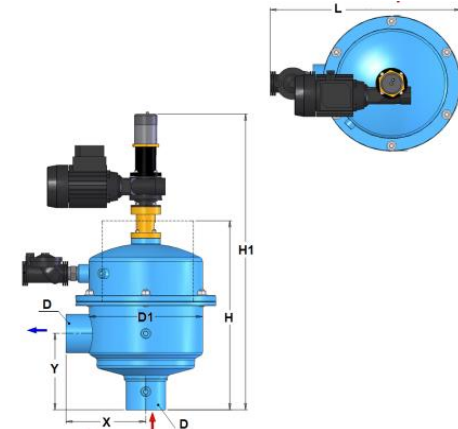


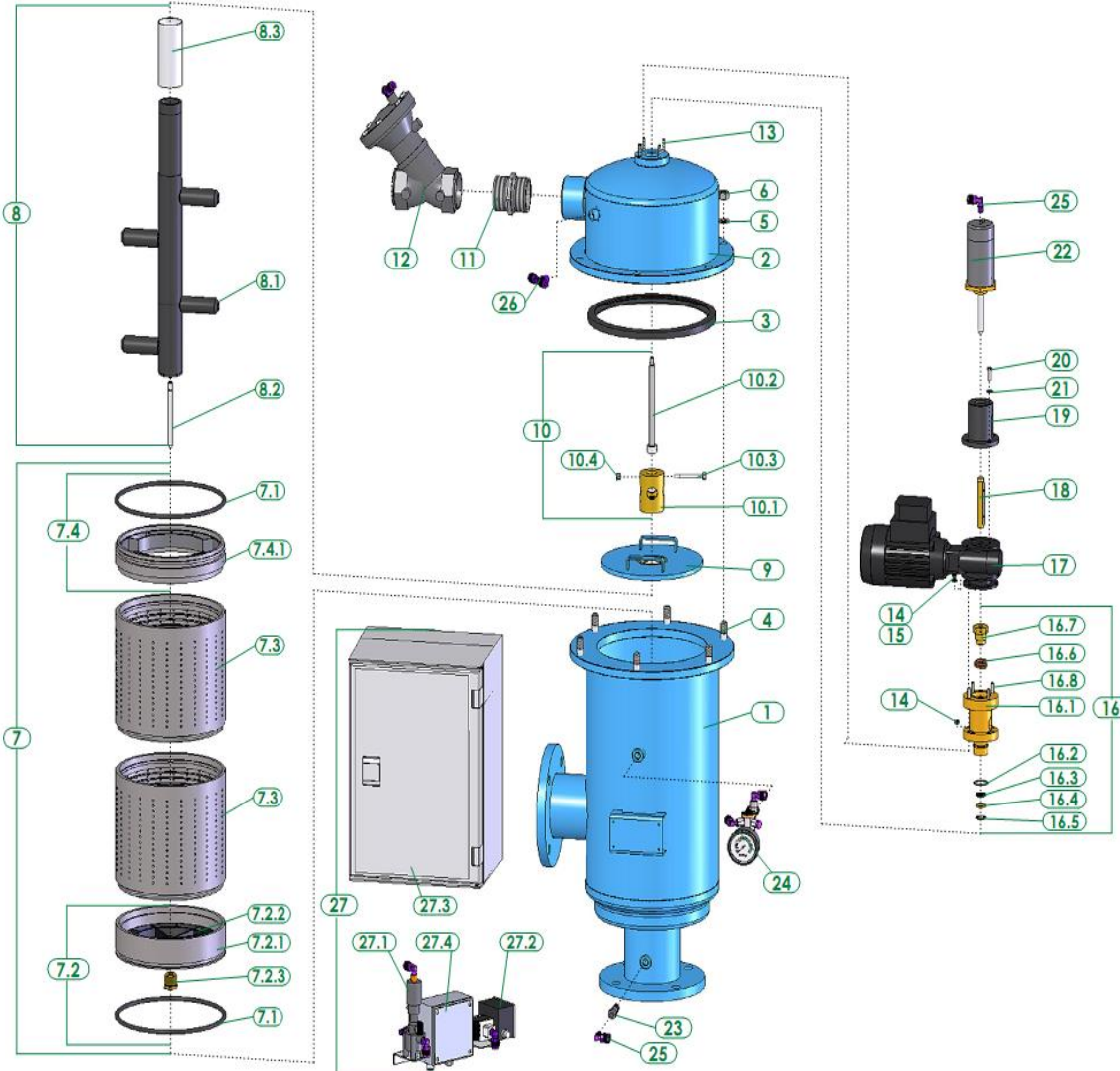
Operation:

Cleaning of the screen is performed automatically once the pressure loss (ΔP) across the filter has reached the preset value up to 0.5 bar (7psi). The flushing valve opens, pressure is released from the hydraulic piston, and debris laden water is discharged through the flushing valve. The electric motor simultaneously rotates the dirt collector and moves it along its axis. The combination of the vertical movement and rotation guarantees that the suction nozzles will cover the entire internal screen surface, efficiently cleaning the screen. The whole process takes 5seconds. During the whole process water supply is uninterrupted

The flushing valve closes at the end of the cycle, pressure reapplied to the piston, moving the nozzles back to their rest position, and the filter is cleaned. During the whole process water supply is uninterrupted.

Model	In/Out ØD		ØD1 (in)	X (mm) (in)		Y (mm) (in)		H (mm) (in)		H1 (mm) (in)		L (mm) (in)		Shipping Weight		Packing Volume L*W*H	
	(mm)	(in)		(mm)	(in)	(mm)	(in)	(mm)	(in)	(mm)	(in)	(kg)	(pd)	(m)	(ft)		
AF202E	50	2	10	220	8.66	197	7.76	475	18.7	737	29.0	465	18.31	43	95	0.77x0.58x0.58	2.53x1.90x1.90
AF202EX	50	2	10	220	8.66	197	7.76	615	24.2	860	33.8	465	18.31	47	103	0.87x0.58x0.58	2.85x1.90x1.90
AF203E	75	3	10	220	8.66	197	7.76	475	18.7	737	29.0	465	18.31	45	95	0.77x0.58x0.58	2.53x1.90x1.90
AF203EX	75	3	10	220	8.66	210	8.27	615	24.2	860	33.8	465	18.31	48	105	0.87x0.58x0.58	2.85x1.90x1.90
AF204E	100	4	10	220	8.66	210	8.27	615	24.2	860	33.8	465	18.31	50	110	0.87x0.58x0.58	2.85x1.90x1.90
AF204EX	100	4	10	220	8.66	315	12.4	1145	45.1	1150	45.3	585	23.04	70	154	1.22x0.68x0.68	4.00x2.23x2.23
AF206E	150	6	10	220	8.66	400	15.75	1380	54.3	1575	62.0	585	23.04	90	198	1.41x0.68x0.68	4.26x2.23x2.23
AF208E	200	8	16	303	11.93	450	17.72	1449	57.0	1700	66.9	642	25.26	150	331	1.43x0.87x0.83	4.69x2.85x2.72



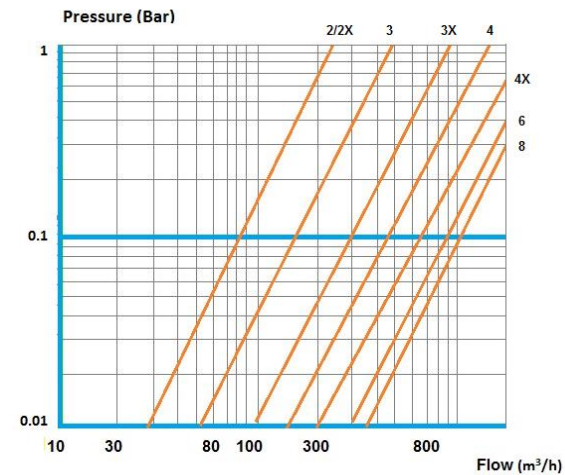


Flow Rate

Model	In/Out ØD (mm) (in)	Max. Flow rate (m ³ /h) (gpm)	Screen Area (cm ²) (in ²)	Flushing Flow rate (m ³ /h) (gpm)	Flushing volume (m ³) (gal)
AF202E	50 2	30 132	1100 253	6 26	0.0083 2.2
AF202EX	50 2	30 132	1630 170	6 26	0.0083 2.2
AF203E	75 3	40 176	1100 253	6 26	0.0083 2.2
AF203EX	75 3	50 220	1630 170	6 26	0.0083 2.2
AF204E	100 4	80 352	1630 170	6 26	0.0083 2.2
AF204EX	100 4	90 396	2770 430	12 52	0.0166 4.38
AF206E	150 6	130 572	4120 640	12 52	0.0166 4.38
AF208E	200 8	200 880	5240 812	12 52	0.0166 4.38

* Max. flow rate is for high quality water at filtration grade of 120 micron

Pressure Loss at 120 micron



Components Description & Spare Parts ordering information

Description		Model							
FILTER		AF202E	AF202EX	AF203E	AF203EX	AF204E	AF204EX	AF206E	AF208E
FILTER BODY		2"	2"	3"	3"	4"	4"	6"	8"
1	Filter body	N/A	N/A	N/A	N/A	N/A	N/A	N/A	N/A
2	Filter Cover	N/A	N/A	N/A	N/A	N/A	N/A	N/A	N/A
3	U-Ring for cover	5311250100	5311250100	5311250100	5311250100	5311250100	5311250100	5311250100	5311400100
4	Stud 1/2" NC	5292143001-043	5292143001-043	5292143001-043	5292143001-043	5292143001-043	5292143001-043	5292143001-043	5292143001-043
5	Washer M12	4121123001	4121123001	4121123001	4121123001	4121123001	4121123001	4121123001	4121123001
6	Nut 1/2" NC	4112140401	4112140401	4112140401	4112140401	4112140401	4112140401	4112140401	4112140401
7	Fine screen PVC225	E7005601000-01##	E7005601001-01##	E7005601000-01##	E7005601001-01##	E7005601001-01##	E7005602001-01##	E7005603000-01##	E7006603000-01##
7.1	O-Ring	4081202100-445	4081202100-445	4081202100-445	4081202100-445	4081202100-445	4081202100-445	4081202100-445	4081266100-450
7.2	Upper screen adaptor	E5005600900-01	E5005600900-01	E5005600900-01	E5005600900-01	E5005600900-01	E5005600900-01	E5005600900-01	E5006600900-01
7.2.1	Upper screen adaptor	5005600900	5005600900	5005600900	5005600900	5005600900	5005600900	5005600900	5006600900
7.2.2	Screen wheel	5021640500	5021640500	5021640500	5021640500	5021640500	5021640500	5021640500	5021010600-P
7.2.3	Screen bearing f/dirt coll.	5172391000	5172391000	5172391000	5172391000	5172391000	5172391000	5172391000	5172391000
7.3	Fine screen	W5005600400-01##	W5005600401-01##	W5005600400-01##	W5005600401-01##	W5005600401-01##	W5005600300-01##	W5005600300-01##	W5006600300-01##
7.4	Lower screen adaptor	E5005601001-02	E5005601001-02	E5005601001-02	E5005601001-02	E5005601001-02	E5005601001-02	E5005601001-02	E5006601000-02
7.4.1	Lower screen adaptor	E5005601001-01	E5005601001-01	E5005601001-01	E5005601001-01	E5005601001-01	E5005601001-01	E5005601001-01	E5006601000-01
8	Dirt collector	E7101610200-01	E7101610201-01	E7101610200-01	E7101610201-01	E7101610201-01	E7102610400-01	E7102610600-01	E7102610601-01
8.1	Suction nozzle	5121610101	5121610101	5121610101	5121610101	5121610101	5121610201	5121610201	5121610202
8.2	Dirt collector shaft	5131300900	5131300901	5131300900	5131300901	5131300901	5131300901	5131300901	5131300902
8.3	Dirt collector sleeve	5171303301	5171303302	5171303301	5171303302	5171303302	5171305000	5171305000	E5171305001
9	Flushing chamber plate	E5023010500-01	E5023010500-01	E5023010500-01	E5023010500-01	E5023010500-01	E5023010501-01	E5023010501-01	E5023010600-01
10	Dirt collector adaptor	E5141390301-01	E5141390301-01	E5141390301-01	E5141390301-01	E5141390301-01	E5141390302-01	E5141390302-01	E5141390303-01
10.1	Dirt collector adaptor	5141390301	5141390301	5141390301	5141390301	5141390301	5141390302	5141390302	5141390303
10.2	Connecting Shaft	W5136301001-01	W5136301001-01	W5136301001-01	W5136301001-01	W5136301001-01	W5136301001-01	W5136301001-01	W5136301003-01
10.3	Bolt	6163100600	6163100600	6163100600	6163100600	6163100600	6163100601	6163100601	6163100601
10.4	Nylock Nut	4111063002	4111063002	4111063002	4111063002	4111063002	4111063002	4111063002	4111063002
11	Double Nipple	4220106500	4220106500	4220106500	4220106500	4220106500	4220200300	4220200300	4220200300
12	Hydraulic Valve	4510010004	4510010004	4510010004	4510010004	4510010004	4510020003-06-1M	4510020003-06-1M	4510020003-06-1M
13	Socket set screw	4101053004-030	4101053004-030	4101053004-030	4101053004-030	4101053004-030	4101053004-030	4101053004-030	4101053004-030
14	Nylock nut	4111053002	4111053002	4111053002	4111053002	4111053002	4111053002	4111053002	4111053002
15	Washer	4121053001	4121053001	4121053001	4121053001	4121053001	4121053001	4121053001	4121053001

Components Description & Spare Parts ordering information

Description		Model							
		AF202E	AF202EX	AF203E	AF203EX	AF204E	AF204EX	AF206E	AF208E
FILTER		2"	2"	3"	3"	4"	4"	6"	8"
FILTER BODY		2"	2"	3"	3"	4"	4"	6"	8"
16	Motor adaptor	E5181391000-01	E5181391000-01	E5181391000-01	E5181391000-01	E5181391000-01	E5181391000-01	E5181391000-01	E5181391000-01
16.1	Motor adaptor	5201390001	5201390001	5201390001	5201390001	5201390001	5201390001	5201390001	5201390001
16.2	O-Ring	4081020100	4081020100	4081020100	4081020100	4081020100	4081020100	4081020100	4081020100
16.3	U-Ring	4082010100	4082010100	4082010100	4082010100	4082010100	4082010100	4082010100	4082010100
16.4	Washer	6143902000	6143902000	6143902000	6143902000	6143902000	6143902000	6143902000	6143902000
16.5	Internal retaining Ring	4133205000	4133205000	4133205000	4133205000	4133205000	4133205000	4133205000	4133205000
16.6	Sealing rope	5319000900	5319000900	5319000900	5319000900	5319000900	5319000900	5319000900	5319000900
16.7	Tightening nut for sealing rope	5181391000	5181391000	5181391000	5181391000	5181391000	5181391000	5181391000	5181391000
16.8	Socket set screw	4101053004-025	4101053004-025	4101053004-025	4101053004-025	4101053004-025	4101053004-025	4101053004-025	4101053004-025
17	Motro 3 phase	E4060121000	E4060121000	E4060121000	E4060121000	E4060121000	E4060121000	E4060121000	E4060121000
18	Gear spinning shaft	E5133391300-01	E5133391300-01	E5133391300-01	E5133391300-01	E5133391300-01	E5133391300-01	E5133391300-01	E5133391300-01
19	Hydraulic piston adaptor	5201630001	5201630001	5201630001	5201630001	5201630001	5201630001	5201630001	5201630001
20	Screw socket head	4101063005-020	4101063005-020	4101063005-020	4101063005-020	4101063005-020	4101063005-020	4101063005-020	4101063005-020
21	Washer	4121063001	4121063001	4121063001	4121063001	4121063001	4121063001	4121063001	4121063001
22	Hydraulic piston	E7160306301	E7160306304	E7160306301	E7160306304	E7160306304	E7160306305	E7160306305	E7160306308
23	Finger Filter	4470010000	4470010000	4470010000	4470010000	4470010000	4470010000	4470010000	4470010000
24	Pressure gauge	CS11010019	CS11010019	CS11010019	CS11010019	CS11010019	CS11010019	CS11010019	CS11010019
25	Male Elbow	4640618082	4640618082	4640618082	4640618082	4640618082	4640618082	4640618082	4640618082
26	Tee 8*1/4*8	4640214082	4640214082	4640214082	4640214082	4640214082	4640214082	4640214082	4640214082
27	Controller ELI-02	CSE0200114401	CSE0200114401	CSE0200114401	CSE0200114401	CSE0200114401	CSE0200114401	CSE0200114401	CSE0200114401
27.1	Solenoid AC	4430030901	4430030901	4430030901	4430030901	4430030901	4430030901	4430030901	4430030901
27.2	DP pressure Switch united	4410000004	4410000004	4410000004	4410000004	4410000004	4410000004	4410000004	4410000004
27.3	Control board ELI-02	8500010100-01	8500010100-01	8500010100-01	8500010100-01	8500010100-01	8500010100-01	8500010100-01	8500010100-01
27.4	Junction Box for ELI-02 controller	8500010801	8500010801	8500010801	8500010801	8500010801	8500010801	8500010801	8500010801