

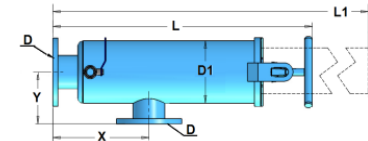
Applications: Control filters with a 90° inlet/outlet.

Standard Characteristics:

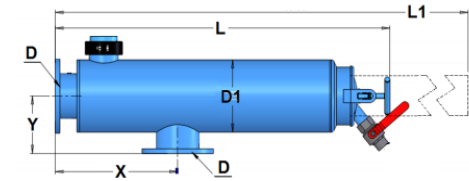
- **Filter element:** - Stainless Steel screen AISI 316, supported by a PVC cylinder
- Available disc elements: 2", 3" & 4"
- **Available filtration grades:** from 80 micron (200 mesh)
- **Filter housing construction material:** Carbon Steel ST37.2
- **Pre-treatment:** sand blasting up to Sa 2.5 grade
- **Exterior & Interior coating:** electrostatic oven baked polyester-epoxy powder coating with a thickness of 150-200 micron (100-80 mesh)
- **Connections:** Victaulic, Threaded and Flange
- **Maximum pressure:** 10 bar (145 psi)
- **Maximum recommended working pressure:** up to 8 bar (116 psi).

Operation:

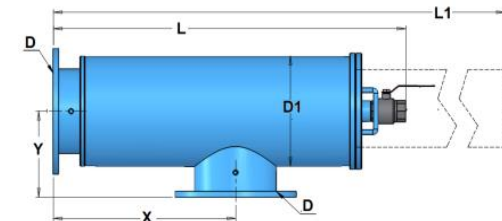
The filters are designed and built in accordance with the principle of water flow through the cylinder screen openings while solid particles are trapped by the screen. These particles can be easily removed by opening the cover and washing the screen manually. The drain valve is used for releasing pressure before opening for maintenance.



Model - F115-F140



Model - F160



Model - F180-F110

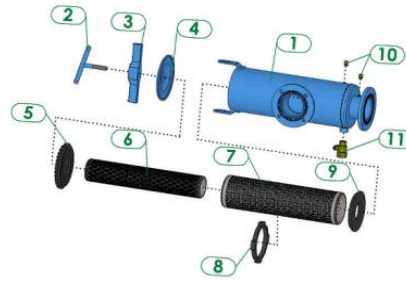
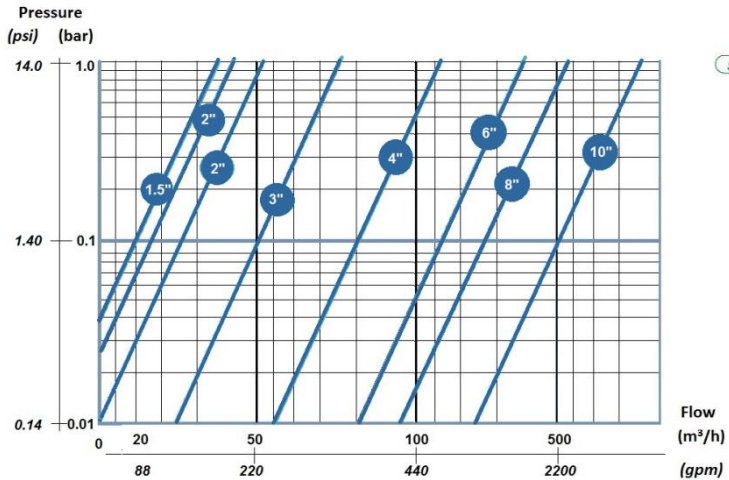
Model	In/Out ØD (in)	ØD1 (in)	X (mm)	Y (mm)	L (mm)	L1 (mm)	Shipping Weight (kg) (lb)		Packaging Vol. LxWxH (m) (ft)		Maximum Flow Rate (m ³ /h) (GPM)		Screen area (cm ²) (in ²)						
F115	30	1.5	4	220	8.7	97	3.8	455	17.9	600	23.6	8.6	19	0.49x0.19x0.19	1.61x0.62x0.62	20	88	639	99
F120	50	2	6	230	9.1	130	5.1	469	18.5	600	23.6	16.1	36	0.52x0.26x0.26	1.71x0.85x0.85	25	110	994	154
F122	50	2	6	255	10.0	130	5.1	719	28.3	1085	42.7	21.8	48	0.76x0.26x0.28	2.50x0.85x0.92	35	154	2023	314
F130	75	3	6	270	10.6	140	5.5	729	28.7	1130	44.5	27.7	61	0.76x0.26x0.28	2.50x0.85x0.92	50	220	2023	314
F140	100	4	8	325	12.8	190	7.5	855	33.7	1330	52.4	38.0	84	0.93x0.36x0.36	3.05x1.18x1.18	90	396	2890	448
F160	150	6	10	480	18.9	217	8.5	1313	51.7	2250	88.6	76.0	168	1.27x0.31x0.42	4.12x1.02x1.38	220	969	4104	636
F180	200	8	12	500	19.7	262	10.3	1104	43.5	1785	70.3	99.0	218	1.10x0.46x0.42	3.60x1.51x1.38	360	1585	4530	702
F110	250	10	14	610	24.0	278	10.9	1179	46.4	1950	76.8	115.0	254	1.10x0.46x0.42	3.60x1.51x1.38	500	2200	6371	988



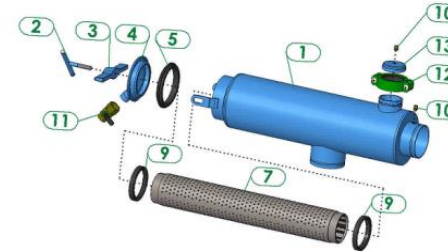
Components Description & Spare Parts ordering information

Part Breakdown		Model							
Filter (in/out)		F115 (1.5")	F120 (2")	F122 (2")	F130 (3")	F140 (4")	F160 (6")	F180 (8")	F110 (10")
Filter Body diameter		4"	6"	6"	6"	8"	10"	12"	14"
1	Filter body	N/A	N/A	N/A	N/A	N/A	N/A	N/A	N/A
2	Handle	E6020104000	E6020106000	E6020106000	E6020106000	E6020106000	E6020106000	-----	-----
3	Tightening bracket	6012004000-P	6012006000-P	6012006000-P	6012006000-P	6012108000-P	6012108000-P	-----	-----
4	Cover	5320010400-P	5320200601-P	5320200601-P	5320200601-P	5320010801-P	W5320010801-03P	W5331011004-01P	W5331011401-01P
5	Cover gasket	5312090600-010	5312140600-050	5312140600-050	5312060600-060	5312160600-150	5312160600-135	5311250100	5311400100
6	Int. filter screen	W5001600400-01##	W5001600400-01##	W5001600401-01##	W5002600400-01##	W5002600401-01##	-----	-----	-----
7	Ext. filter screen	-----	W5003600400-01##	W5003600402-01##	W5003600402-01##	W5004600400-01##	E7004600404-01##	E7005604007-01##	E7006604003-01##
8	Centering gasket	-----	-----	-----	-----	5312160600-161	-----	-----	-----
9	Screen gasket	5312090600-020	5312140600-080	5312140600-080	5312140600-100	5312160600-300	5312160600-310	-----	-----
10	Pressure testing port	E5412023901-01	E5412023901-01	E5412023901-01	E5412023901-01	E5412023901-01	E5412023901-01	E5412023901-01	E5412023901-01
11	Ball valve	4504005100-01	4504007100-01	4504007100-01	4504007100-01	4504010100-01	4504015100-01	4504020100-01	4504020100-01
12	Quick Coupling 4"	-----	-----	-----	-----	-----	4150104000-03P	-----	-----
13	Cover 4" vic	-----	-----	-----	-----	-----	5320010402-P	-----	-----
14	Stud	-----	-----	-----	-----	-----	-----	5292143001-048	5292143001-048
15	Washer	-----	-----	-----	-----	-----	-----	4122140301	4122140301
16	Nut	-----	-----	-----	-----	-----	-----	4112140301	4112140301
17	O-ring	-----	-----	-----	-----	-----	-----	4081202100-445	4081266100-450

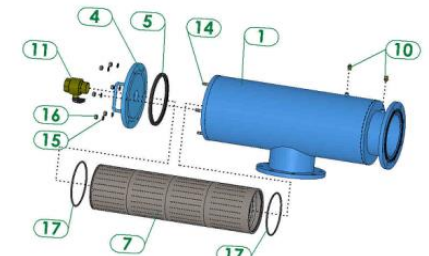
Pressure loss at 120 micron



Model F115-F140



Model F160



Model F180-F110